

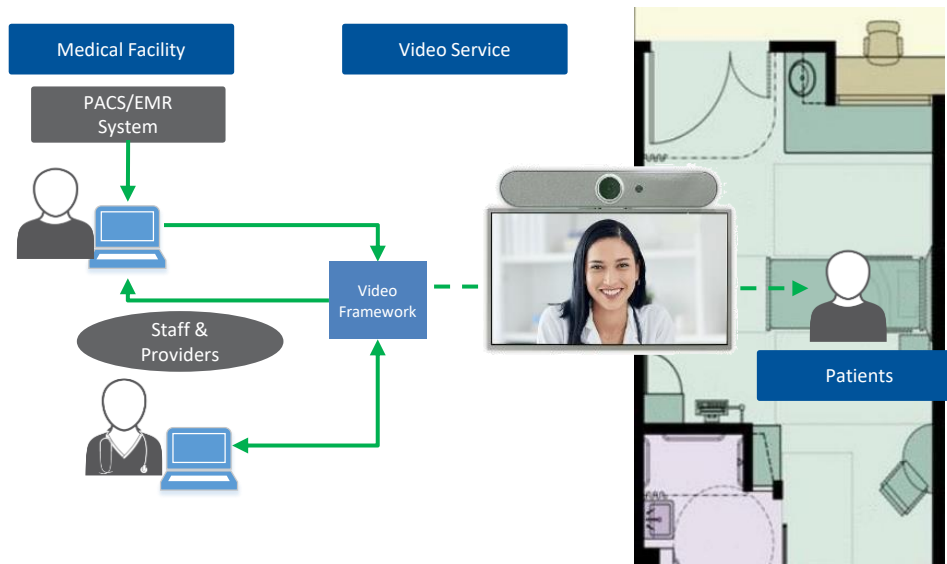
Telecapabilities That Go Beyond

Expand your use cases and access while lowering cost.



TeleRay.Visit is a platform which allows for two-way communication for any virtual use case including telenursing, telesitting, virtual visits including rounds, discharge, and consultation. TeleRay.Visit offers the most advanced security, and additional capabilities not found with other vendors. TeleRay.Visit gives a complete and more holistic opportunity by viewing images, reports and results during any consultation.

Standard Video Flow



- Typically 1 way communication
- Standard camera
- One caller per session
- No outside access
- High cost per minute- cost of ownership
- Lack of portability



TeleRay Video & Data Flow

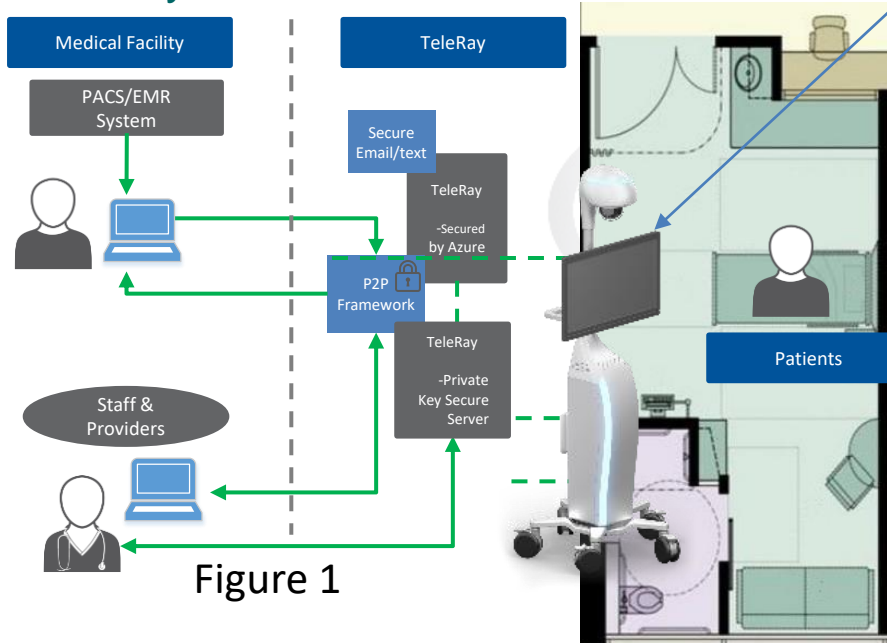
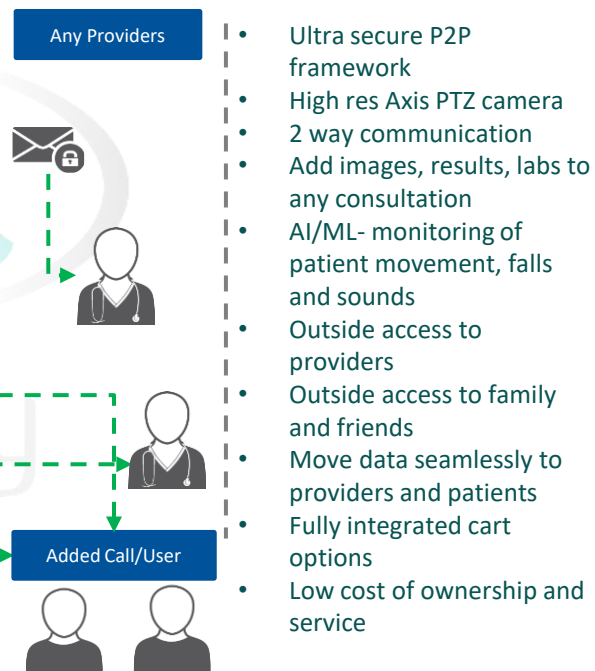


Figure 1

Integrates with more than 250 EHR/EMR systems.

Outside facility walls



- Ultra secure P2P framework
- High res Axis PTZ camera
- 2 way communication
- Add images, results, labs to any consultation
- AI/ML- monitoring of patient movement, falls and sounds
- Outside access to providers
- Outside access to family and friends
- Move data seamlessly to providers and patients
- Fully integrated cart options
- Low cost of ownership and service

TeleRay and Axis Cameras

Compliant Two-Way Communication



telaray.visit

TeleRay has partnered with best-in-class camera company Axis Communications to offer state of the art Pan, Tilt, Zoom (PTZ) options with built in AI applications for fall risks, out of bed alerts, security, and sound intelligence for sound monitoring from devices, coughing and aggression detection. Axis works seamlessly with EPIC and other EMR systems to deliver a multi-use case system with TeleRay.

#1

Industry leader in IP video



Network solutions in video surveillance, access control, intercom and audio systems



4,210 employees in 50+ countries**



1.6 B USD***



Committed to UN Global Compact



Fully NDAA Compliant
Not made in China



HQ Sweden – 1984



“Once leaders at other facilities in our healthcare network saw how the new system helped with things like preventing falling risks and investigations, demand for the new technology spread like wildfire,”

Robert Sherwood, Director of Public Safety Technology for Lee Health



Deep Linking (Legacy)

2 Way Audio Video
PTZ Controls (Digital and Optical)
Preferred Language Push
Two-way Video



ECAL (New – Uses Axis’s home-grown VMS as engine)

2 Way Audio Video
PTZ Controls (Digital and Optical)
PTZ Control From Watchlist
Preferred Language Push
Future Integrations Planned

Integrating AXIS Camera Station software with **Epic Monitor ECAL** (Embedded Context Aware Linking) provides assistive technology to help monitor patients and maintain a higher level of care. In-room cameras with audio capabilities and built-in analytics, coupled with EMR, allows healthcare practitioners to observe patients in real-time. A more efficient remote monitoring of multiple patients with fewer resources.

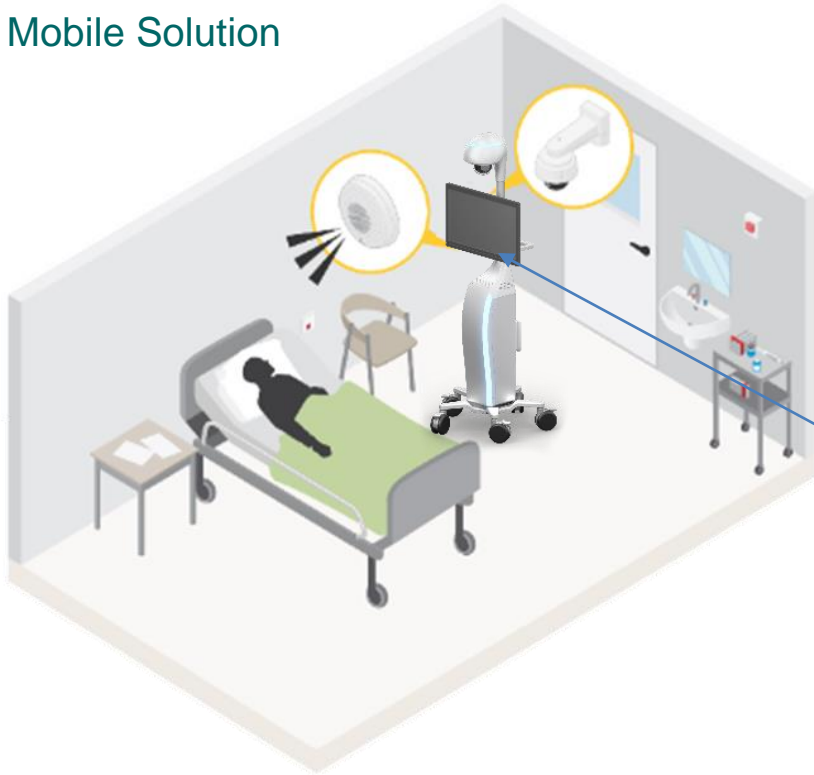
TeleRay and Axis Cameras

Compliant Two-Way Communication



teleray.visit

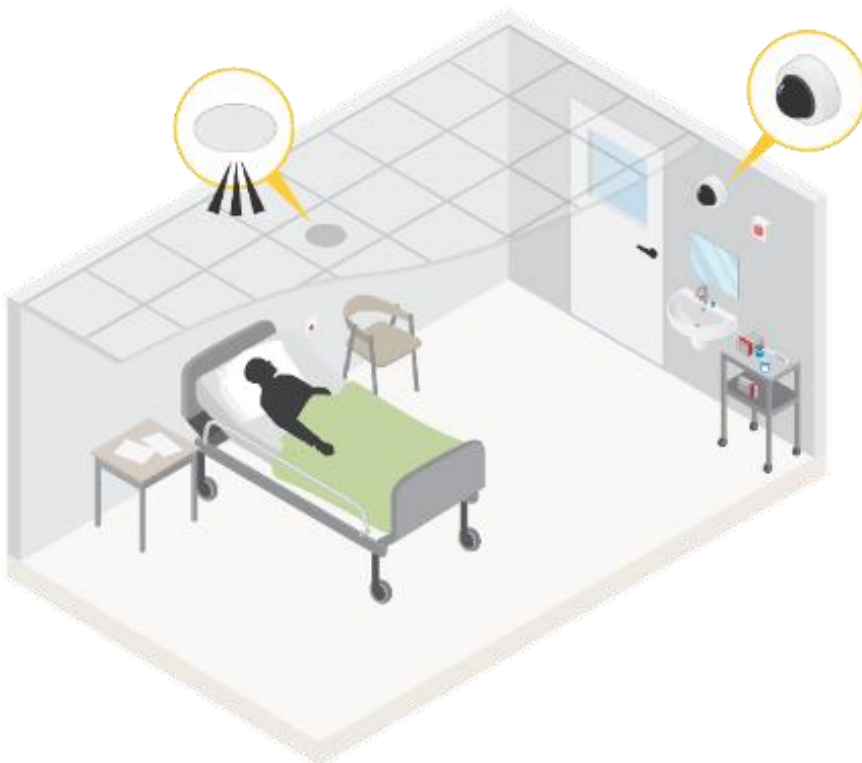
Axis Video and Audio – Mobile Solution



- Healthcare practitioners can easily and efficiently monitor multiple patient or resident rooms and ably assist and interact if needed
- This portable setup makes it possible for healthcare practitioners to give assistance to those patients/residents where a fixed solution cannot be deployed
- Axis network camera mounted on a mobile cart that is also equipped with an Axis network speaker and microphone
- Includes all TeleRay features for virtual visits and consultations



Axis Video and Audio –Fixed Solution

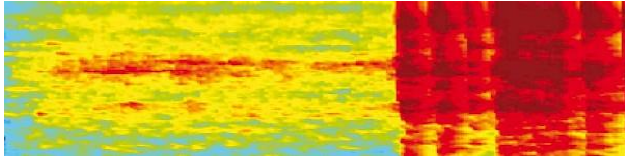


- Healthcare practitioners can easily and efficiently monitor multiple patient or resident rooms and ably assist and interact if needed
- Axis network camera mounted in the room
- Axis network speaker installed on the ceiling
- Both devices are managed and configured in AXIS Camera Station
- Includes all TeleRay features for virtual visits and consultations
- TV or other screen may be used for displaying TeleRay virtual visits
- Includes all TeleRay features for virtual visits and consultations

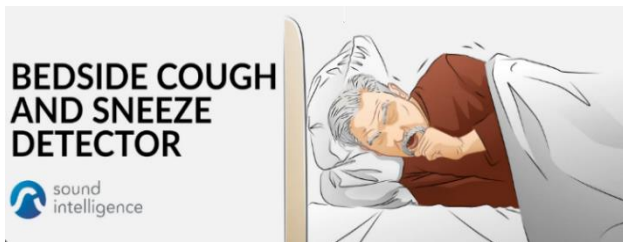
TeleRay and Axis Cameras

Compliant Two-Way Communication

Staff will know issues and be prepared before entering room with specialized AI alerts including sound detection and fall risks.



All sounds are monitored including devices such as infusion pumps.



Aggression, Cough and Medical Device Detection and Alerts.

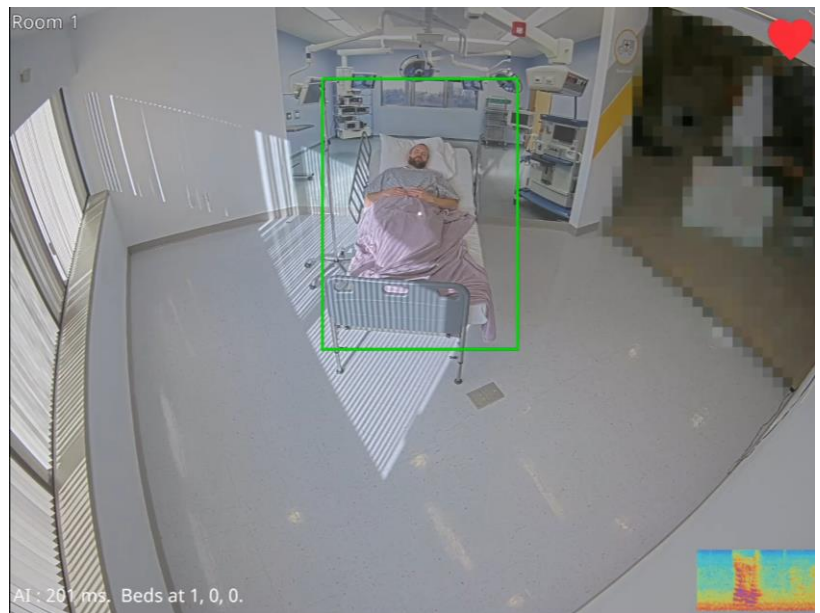


FREE - Axis Live Privacy Shield to protect patient privacy and give comfort to patients that require consistent monitoring.

Camera may read drip rate and levels of IV bags.



Patient Out of Bed and Fall Risk Detection with Aidant Care (Hit play if PDF version)



Additional AI applications will be added as part of the TeleRay and Axis roadmap of providing best in care solutions.

TeleRay Use Cases

Solve numerous use cases with a single platform.

Tele-sitting (Epic Monitor + Axis Cameras):

Epic Deep Linking: Free no reoccurring fees, two-way audio, one way video for fixed or mobile workflows, Two-way video (fixed in room only, no mobile), PTZ controls, preferred language push (prerecorded messages)
Epic ECAL: 89\$/ Channel MSRP + base installation package, two-way audio, one way video for fixed or mobile workflows, PTZ controls, preferred language push, (prerecorded messages)
Artificial Intelligence Support: ARTPEC8 camera chips. AI models for patients out of bed, patient fall, aggression and cough detection. AI models are third party and a la carte that run on the camera GPU/CPU
Camera event triggering event integration into SPOK
Multi-tenant support for tele-sitting and virtual nursing (TeleRay Visit)



Virtual Nursing (TeleRay Visit):

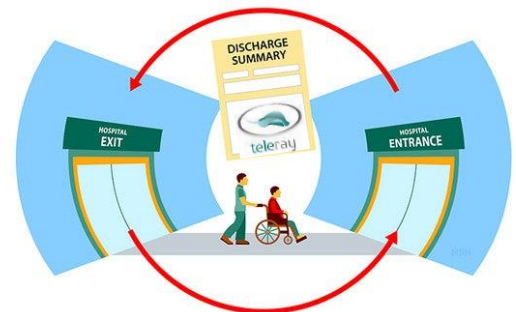
Cost Structure (Not including hardware): \$50/room (or cart) /month.

Two Way Video and Audio - for general ad hoc clinical communications with remote nurse
Virtual Care Consultations - clinician to patient
Remote Nursing Admissions – typical admissions processes without need for bedside access
Remote Nursing Discharges - typical discharge processes without need for bedside access
Patient Consent – remote patient agreement for procedural workflows
Specialist collaboration – ability to send active links to remote clinicians for specialized treatment plans
Virtual Rounding (Epic Hyperspace workflow and/or TeleRay Logging of calls) – ability to log round
Dual Medication Validation – additional workflow of ad hoc communication used to validate medication distribution
TeleICU - additional workflow of ad hoc communication used to facilitate workflows for patients in ICU
Virtual Visitations – Ability to send active links to remote patient visitors via email or text from TeleRay software
Fixed in room workflows supported for above
Mobile workflows supported for above pending cart purchase and cart attributes
Epic Context Aware Linking CAL – Live two-way video link to room from Hyperspace

PACS:

Image enablement
Image exchange with report / send studies to patients referring and specialist
Access to images anywhere and on any device
Tele-stroke – Platform connects PACS and Virtual Nursing at same time for ED/ collaboration
Live Streaming of any modality (pending use of additional hardware for workflow support)

Admissions, scripts, and discharge rounds will be virtual. With TeleRay, your infrastructure will be prepared for this evolution.



Telemedicine for Live Modalities

Compliant and secure remote modality use



teleRay.Live

TeleRay.Live is a platform which transmits real-time modality use at the point-of-care to qualified physicians from any site, whether it is remote or an underserved location. TeleRay.Live facilitates reliable transmission of modalities with both visual and audio communication. This provides early access information and the ability to give live remote instruction to the working technician.



Review real-time Imaging

Communicate with the
sonographer

Consult a physician

Here the physician is remotely directing the sonographer via TeleRay.Live on the TeleRay platform. This allows for improved efficiency and greater patient outcomes.

TeleRay.Live allows the technician or physician to send a consulting provider the imaging during a live scan with high frame rate, high resolution and low latency. The connection includes a two-way audio feed allowing for real-time communication. Many practices use this tool for remote specialists needed during the live scan to provide instant feedback and ensure they are capturing the required images. Other use cases are sonographer education, room management, rural and expanding outreach programs. TeleRay.Live Is HIPAA Compliant and FDA registered. With the integration to our image exchange platform, the system provides a perfect solution for consultation and delivery of full fidelity DICOM images to the reading physician for better outcomes and lower liability.

Configuration	Hardware Install & Training	Monthly Rate
Touch Screen PC, Stand, Video Capture Module, BT headphones	\$5,995	1 st year included \$195 per month after 1 st year for unlimited use including TeleRay platform



Fast and Portable Telemedicine

Compliant, secure, consultation from anywhere



teleray.Cart

Take the power of TeleRay wherever you need it with our full line portable hardware solution. Whether it's a remote bedside visit, a different room in the office, or other special circumstances, TeleRay.Cart may be moved where it is needed for patient or professional consultation. We offer multiple mobile cart configurations that allow for complete mobility of the telehealth station. Cameras, power packs, lighting and other options for upgrades are available.

- Integrated support
- Remote device management
- All-in-one
- Anti-bacterial powder coating
- Dual front stereo speakers with Dolby audio
- Premium full HD webcam and dual digital microphones give you quality communications
- Thousands less than competition



TeleRay on a cart has been a lifesaver....literally! We use it for so many use cases in the hospital it has become indispensable. Thank you.

*John Calisto
Clinical Professional*

Create a great patient experience with primary and specialty providers. Equipped with a touch screen interface, amplified audio, integrated support and Wi-Fi, care teams can quickly initiate a telehealth consultation between patients with one or more remote providers.

Key Features

- Industry grade quality
- Small wheelbase
- Smooth-roll wheels
- 21" monitor

Medical Grade Professional Carts. Save \$1,000s over other brands. Starting at \$3,995.00 for complete systems. Call for options and details.



teleray.Halo

TeleRay HALO Medical Grade Cart

High-Tech Telehealth/Telemedicine Cart with Service

The ultimate cart with unlimited services.

Halo by TeleRay is the latest innovation for carts with TeleRay Services.

Medical grade with high tech features for demanding situations. Whether it's a consultation, patient monitoring, virtual rounds, and other situational issues, HALO can accommodate your needs.

Special features:

- 2' standard pole for peripheral mounting
- Integrated PoE switch
- Two way speakerphone with noise cancellation
- AXIS PTZ camera
- 5 point wheelbase- non-marking 4" casters
- Accessible power system
- Removable computer for easy serviceability
- 15' power cable
- Complies with: IEC60601/ IEC61000-4-2/ RoHS/Reach
- 1 Year warranty including services

Custom options:

- VESA mounted computer (up to 27" or 32" monitor)
- Multi-battery CPU for non-stop mobile use
- Bluetooth keyboard and mouse
- Built-in AI for patient movement, fall detection
- Sound Intelligence for cough, aggression, equipment detection
- UPS power options up to 600VA
- External accessible ports (2x USB, RJ45, buttons, etc.)

Custom Status Lights -246 Programmable LEDs:

- Unit status: Power on/ Setup/ Standby modes
- System diagnostic, camera in use, Alerts
- Three distinct lighting locations on body/head
- Development kit available for programming

All Halo systems include TeleRay subscription for telehealth/telemedicine, sharing and exchanging images, FDA approved viewer, and much more.



Multiple options available.
Starting at \$10,995.00



TeleHealth/Telemedicine Carts

Compliant, secure, and easy to use face-to-face visits from anywhere

Key Features:

- Works on desktop, tablet, laptop, or mobile
- No download required – use TeleRay on any web browser (Chrome, Edge, Firefox, etc.)
- HIPAA compliant and FDA registered with advanced encryption architecture
- Cellular mobile option
- On demand USA based technical support for both patients and providers
- Customization of software to the organization's branding- including cart branding
- Radiological integration
- DICOM file transfer and study share capability to allow for provider and patient to review radiological images and other records
- Virtual waiting room
- Seamless integration with existing EMR
- Free onboarding
- Transfer calls and add callers
- Low-cost full service
- No hidden fees
- Optional scheduling software with insurance checker
- Optional AI for fall detection, sound detection
- Can be implemented in a single day



Optional Cybernet CPU with multiple battery packs for uninterrupted use. Options include- bar scanner, card reader, and more. Please ask about this option.

TeleRay HALO starts at \$10,995 based on upgrades and features.

Quantity discounts available.

